

ADM1000 Series

ETUAN

It is designed for flexibility, high speed & high precision dispensing;
 Allowing higher pay load on robot gantry for specific application;
 Cost effective dispensing solution for many industry applications

Dispensing Processes

- Flip Chip Under-Fill
- Encapsulation
- Continuous Path
- Dotting
- Two Part Mixing
- Others



ADM1035 - IL

(1) Dispensing Aspect

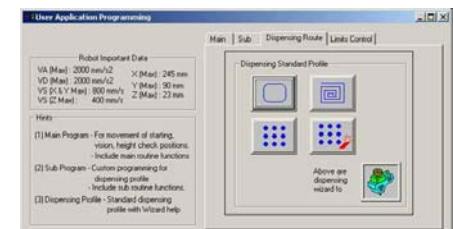
- Dot Rate* : 15,000 dots per hour (Needle)
18,000 dots per hour (Non-Contact)
- Dispensing Area : 350mm(X) 350mm(Y) 50mm(Z)
450mm(X) 450mm(Y) 50mm(Z)
- Valve Mounting : Max 4 nos

(2) 'SQ' Robot Gantry Data

- Working Size : 450mm(X) 400mm(Y) 50mm(Z)
550mm(X) 500mm(Y) 50mm(Z)
- Working Pay Load : Max 10kgf
- Resolution : 10 microns
- Repeatability : ± 25µm
- Accuracy : ± 25µm
- Speed** : Max 1,000mm/sec for X & Y Axes
Max 600mm/sec for Z axis

(3) Programming

- Software : ADM.exe v4.5
c/w User Application Programming (UAP -ADM v3.0)
- Program Size : Hard Disk Capacity
- Program Method : Remote Mode Through PC



ETUAN "ADM1000 Series" offer high quality dispensing solution with flexible and expandable function through high speed and high precision performance.

The equipment configuration come with semi/ fully automatic with stand-alone or in-line. Dispensing module can be equipped with high quality Jetting Valve (Non-Contact), Positive Displacement Servo Rotary Valve & etc.

Our products are widely used in Semicon, PCBA/SMT, automotive, electronics & other industries.



ETuan Mechatronic Pte Ltd
 Block 7, Kaki Bukit Road 1, #03-12, Eunos Technolink,
 Singapore 415937

Tel: +65 6482 1220
 Fax: +65 6482 2887

Email: sales@etuan.com.sg
 Website: www.etuan.com.sg



Liqud Dispensing System
ADM1000 Series